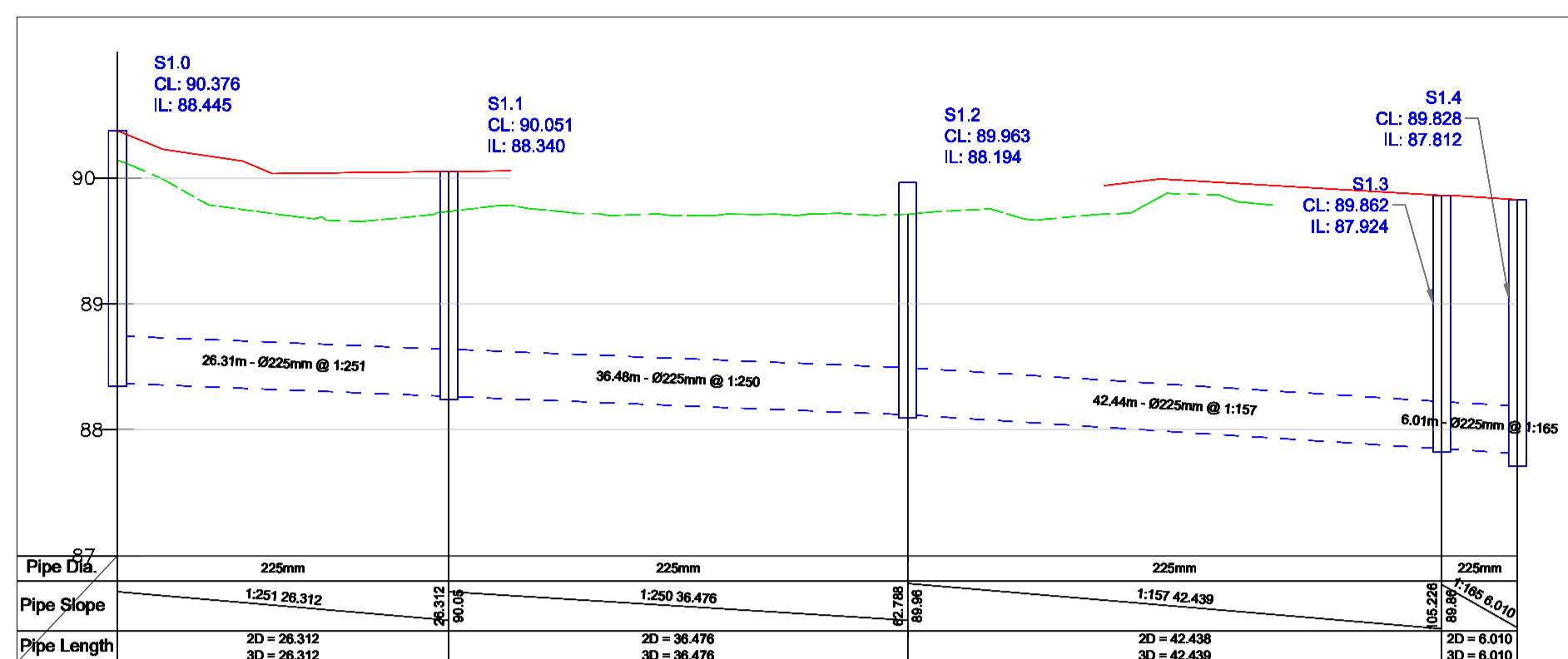


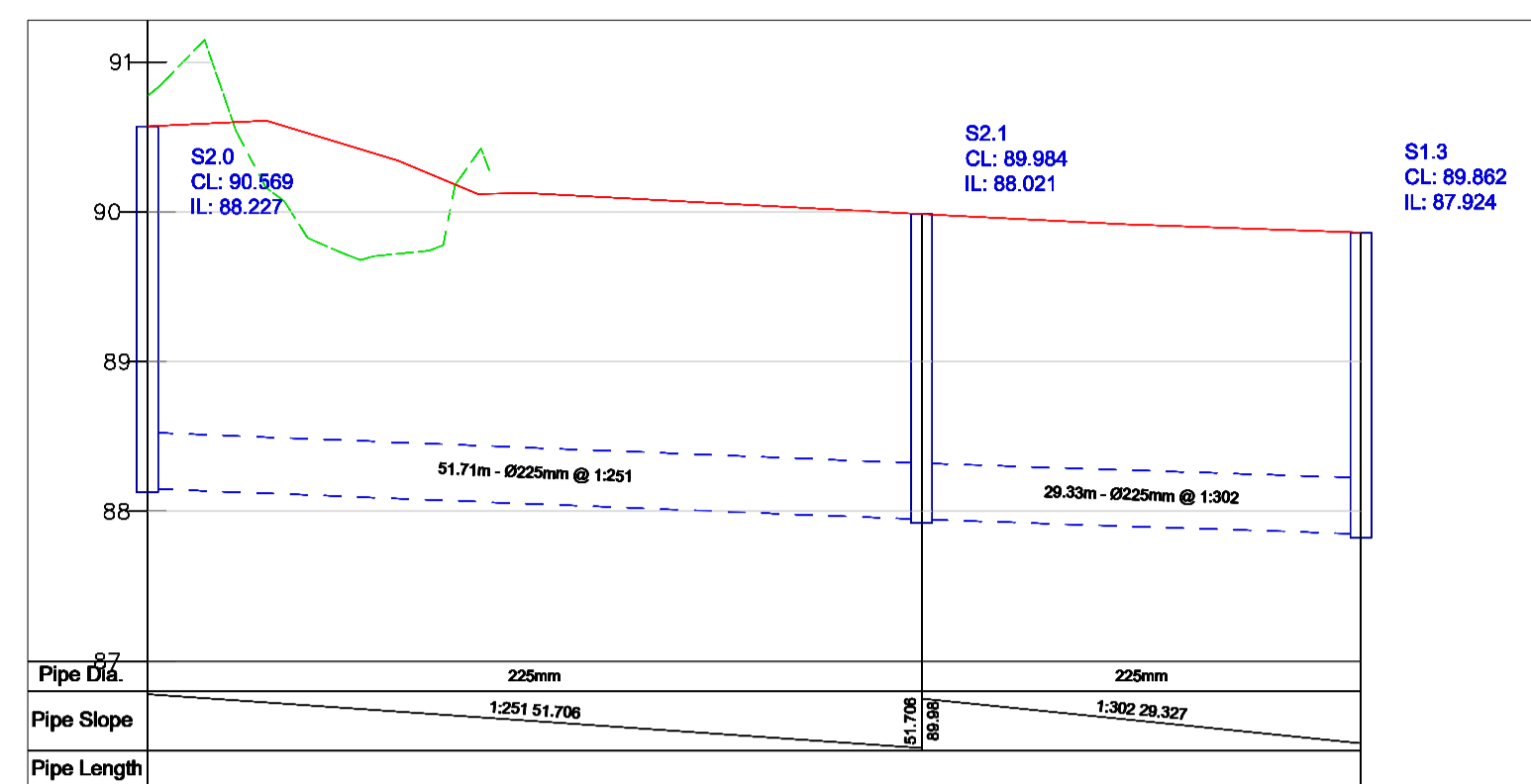
NOTES

- THIS DRAWING IS TO BE READ IN CONJUNCTION WITH ALL ENGINEERS & ARCHITECTS DRAWINGS FIGURED DIMENSIONS ONLY (NOT SCALING) TO BE USED. WHERE A CONFLICT OF INFORMATION EXISTS OR IF IN ANY DOUBT - 'ASK'.
- CONSULTANTS TO BE INFORMED IMMEDIATELY OF ANY DISCREPANCIES BEFORE WORK PROCEEDS.



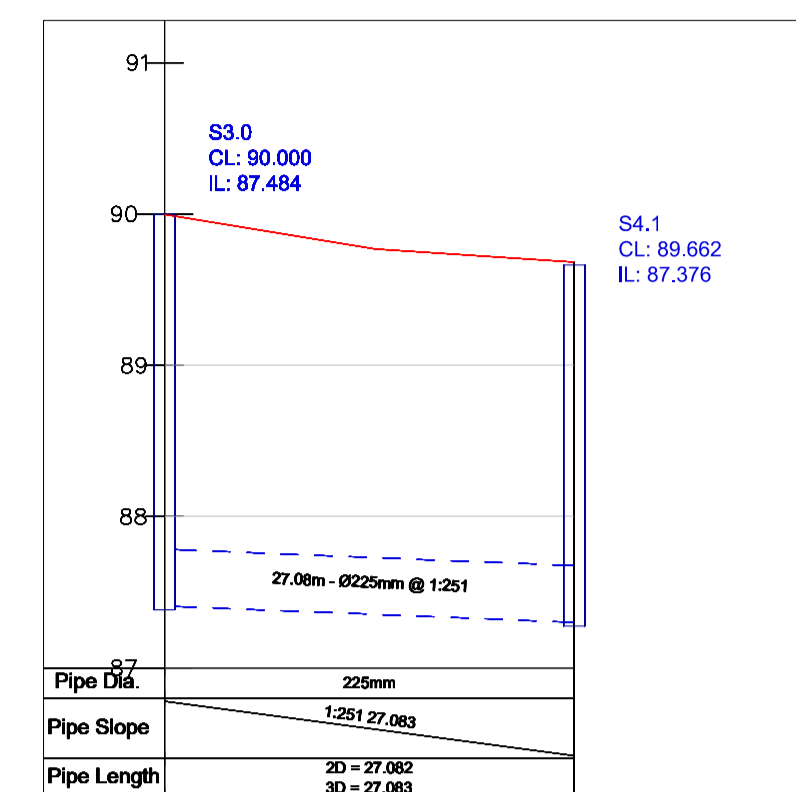
S1.0 SURFACE WATER NETWORK LONGSECTION 1

SCALE @ A1: H= 1:500 ; V= 1:50
SCALE @ A3: H= 1:1000 ; V= 1:100



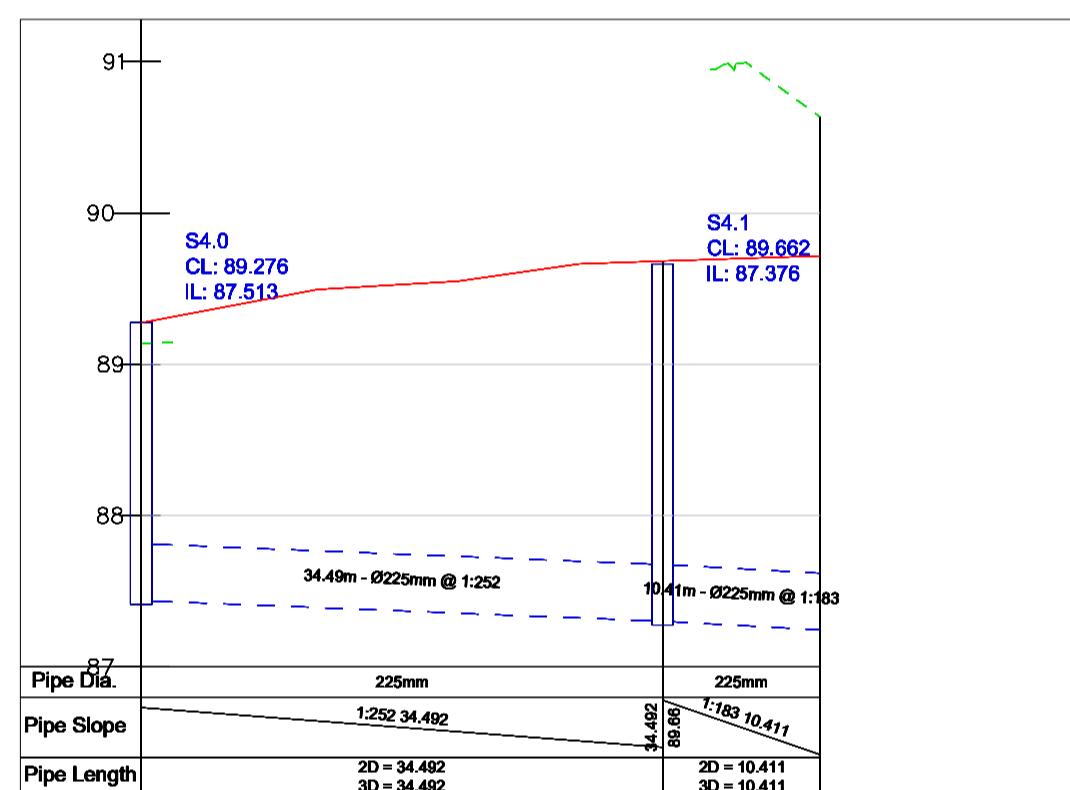
S2.0 SURFACE WATER NETWORK LONGSECTION 1

SCALE @ A1: H= 1:500 ; V= 1:50
SCALE @ A3: H= 1:1000 ; V= 1:100



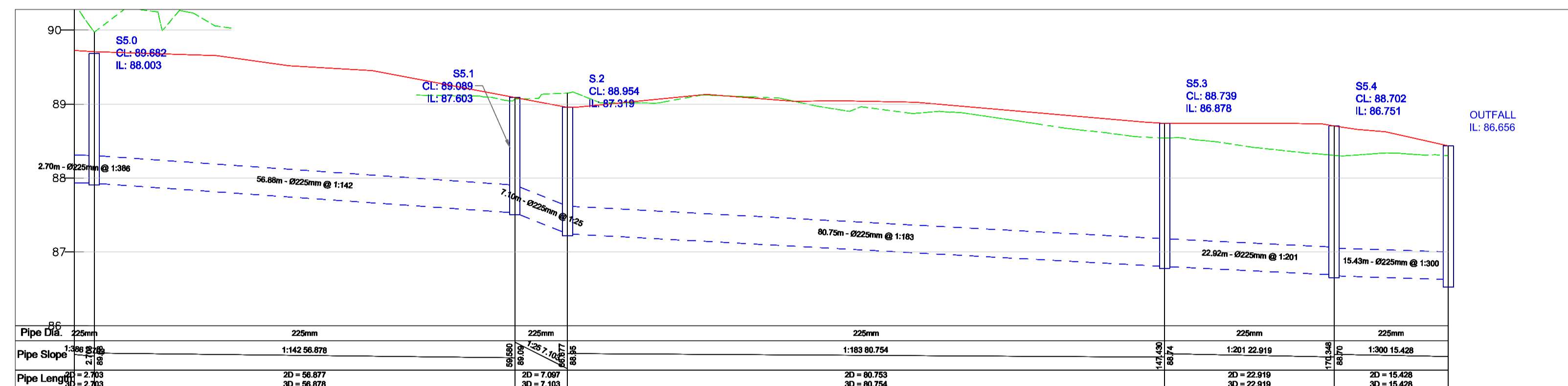
S3.0 SURFACE WATER NETWORK LONGSECTION 1

SCALE @ A1: H= 1:500 ; V= 1:50
SCALE @ A3: H= 1:1000 ; V= 1:100



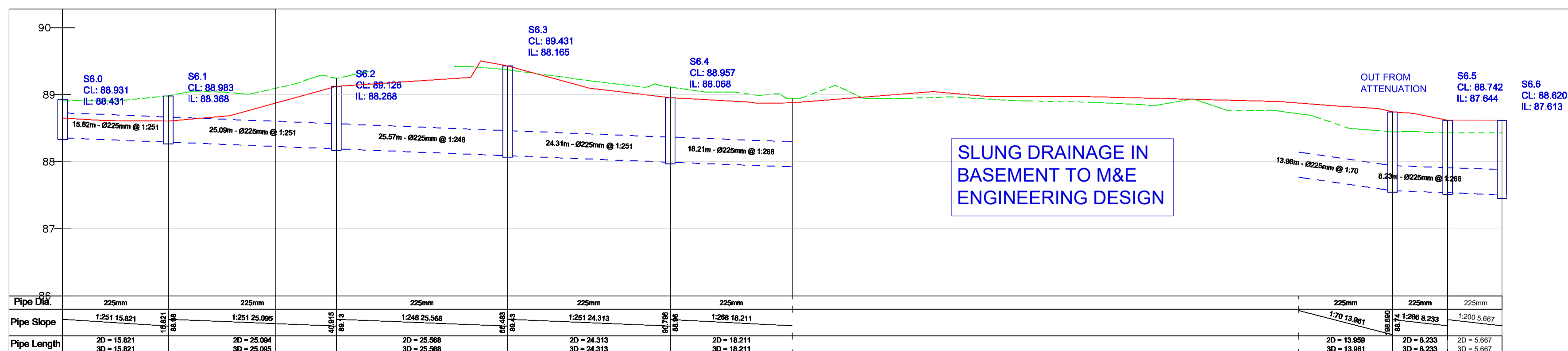
S4.0 SURFACE WATER NETWORK LONGSECTION 1

SCALE @ A1: H= 1:500 ; V= 1:50
SCALE @ A3: H= 1:1000 ; V= 1:100



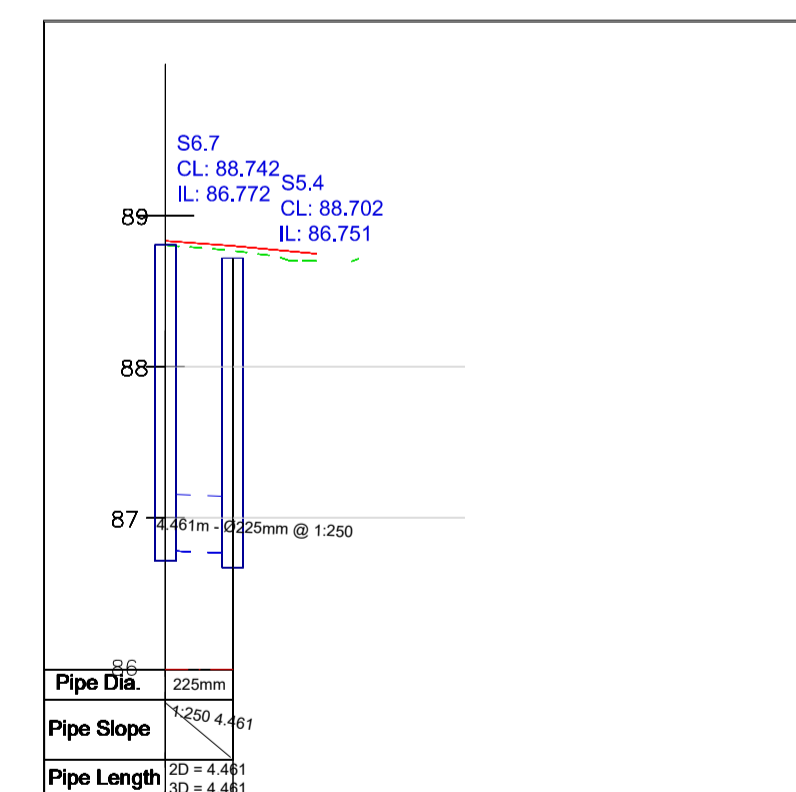
S5.0 SURFACE WATER NETWORK LONGSECTION 1

SCALE @ A1: H= 1:500 ; V= 1:50
SCALE @ A3: H= 1:1000 ; V= 1:100



S6.0 SURFACE WATER NETWORK LONGSECTION 1

SCALE @ A1: H= 1:500 ; V= 1:50
SCALE @ A3: H= 1:1000 ; V= 1:100



S6.7 SURFACE WATER NETWORK LONGSECTION 1

SCALE @ A1: H= 1:500 ; V= 1:50
SCALE @ A3: H= 1:1000 ; V= 1:100

ISSUE	DATE	DESCRIPTION	DRN	P.E.
P2	12.02.20	ISSUED FOR PLANNING	JG	JC
P1	13.12.19	ISSUED FOR PLANNING	JG	JC
			DRN	P.E.
			ORIG	P.D.

PLANNING

BM Dublin Office: Sandwith House, 52-54 Lower Sandwith Street, Dublin 2, Ireland. Tel: (01) 677 3200 Fax: (01) 677 3164
London Office: 12 Mill Street, London SE1 2AY, United Kingdom Tel: (0044) 084 5413 2722
Consulting Engineers, Civil / Structural - Project Management. E-mail: bmce@bmce.ie Web: www.bmce.ie

ACEI The Institution of Structural Engineers
ICE International Federation of Consulting Engineers

CLIENT: **GREENLEAF HOMES LIMITED**

PROJECT TITLE: **MIXED-USE DEVELOPMENT, THE FORMER GALLAHER SITE, AIRTON ROAD, TALLAGHT, D24** BM PROJECT No: **19.136**

MODEL REFERENCE: **ARD-BMD-00-XX-DR-C-1050** MODEL REV: SUITABILITY

DRAWING TITLE: **SURFACE WATER DRAINAGE LONGITUDINAL SECTIONS SHEET 1/2**

DRAWING No: **ARD-BMD-00-XX-DR-C-1052** ISSUE: **P2**